

PC TABLE LAMP

DESIGN BY PIERRE CHARPIN



Pierre Charpin's PC Table Lamps is a collection of refined freestanding tabletop lamps. The lamps are constructed in anodised aluminium, which makes the surface more resistant to corrosion. The light source is hidden from view by a removable polycarbonate moulded diffuser, creating both a soft directional downlight effect and determining the form of the lamp itself. The PC Table Lamps are available in a variety of sizes and colours, and are suitable for both contract and domestic markets.

PRODUCT DETAILS

- / Part of a progressive and technologically advanced lighting collection.
- / A family of refined pendants, task lights, table and portable lamps.
- / CE approved.
- / Designed for use with a replaceable standard retro fit LED dimmable bulb.
- / Touch step dimmer.
- / Table lamp suitable for both private and office environments.
- / Qualified for contract use.

MATERIALS

SHADE / Anodised spun aluminium shade.

BASE / Anodised extruded aluminium base with a cast iron internal weight.

DIFFUSER / Injection moulded translucent polycarbonate diffuser.

CABLE / Braided textile cable with PVC insulation.
Please note that the cable is black for all colour options.

COLOUR & FINISH

Please note that the colour codes are indicative.

Available in 2 different colours.

/ Soft black anodised (RAL 9004)

/ Aluminium anodised



SOFT BLACK



ALUMINIUM

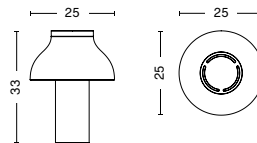
DIMENSIONS

SMALL

WIDTH / 25 cm / 9.8"

DEPTH / 25 cm / 9.8"

HEIGHT / 33 cm / 13"

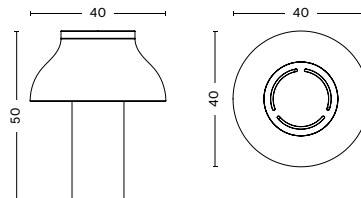


LARGE

WIDTH / 40 cm / 15.7"

DEPTH / 40 cm / 15.7"

HEIGHT / 50 cm / 19.7"



TECHNICAL SPECIFICATIONS

SMALL

- / RECOMMENDED LIGHT SOURCE* / LED E27 (A19) (globe styles are not recommended)
- / POWER (watts) / 10-13W
- / DIMMABLE / Yes
- / POWER SUPPLY / 220-240V AC at 50/60Hz EU plug mounted (UK adaptor included)
- / CORD LENGTH / 200 cm
- / SWITCH / Touch step dimmer (entire base of lamp)

*Bulb not included.

TEST SPECIFICATIONS*

- / FLUX (lumens) / 1000-1500lm
- / CCT (kelvin) / 2700-3000k, warm white
- / CRI (1-100) / 80

*Photometrics and the specification shown is taken using the recommended LED bulb fitted in the production luminaire.

CERTIFICATIONS

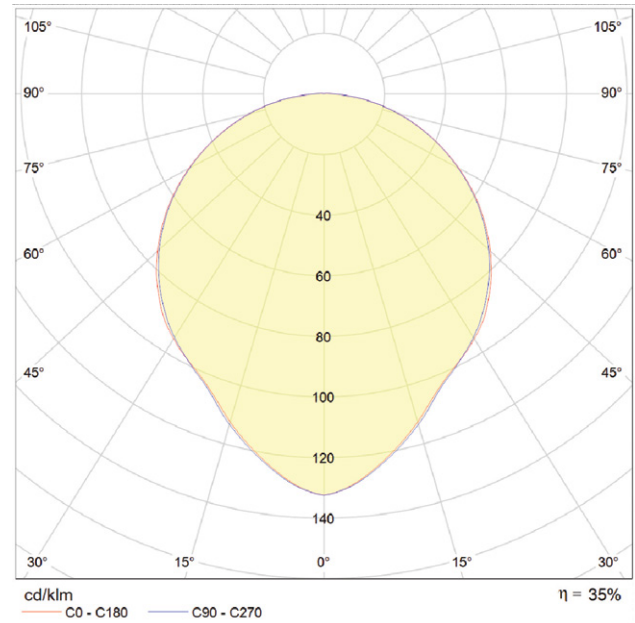
- / CE approved: this product has been assessed and complies with the essential requirements of the relevant European directives.



Tested according to the following European EN / IEC standards which relate specifically to electrical lighting products including:

- / EN 55015:2013 (radio disturbance)
- / EN 61547:2009 (EMC immunity)
- / EN 61000-3-2:2014 (EMC compatibility)
- / EN 61000-3-3:2013 (EMC compatibility)
- / EN 60598-2-4:1997 (portable luminaires)
- / EN 60598-1:2015 (general requirements)
- / EN 62493:2010 (human exposure to EMC)

PHOTOMETRICS



DOWNLOADS

Packshots and lifestyle photos, 2D / 3D files, care and maintenance instructions, CE attestation of conformity certificates, product fact sheets, and product presentations are available in our Image Bank at hay.com.

[Link to downloads.](#)

TECHNICAL SPECIFICATIONS

LARGE

- / RECOMMENDED LIGHT SOURCE* / LED E27 (A19) (globe styles are not recommended)
- / POWER (watts) / 10-13W
- / DIMMABLE / Yes
- / POWER SUPPLY / 220-240V AC at 50/60Hz EU plug mounted (UK adaptor included)
- / CORD LENGTH / 200 cm
- / SWITCH / Touch step dimmer (entire base of lamp)

*Bulb not included.

TEST SPECIFICATIONS*

- / FLUX (lumens) / 1000-1500lm
- / CCT (kelvin) / 2700-3000k, warm white
- / CRI (1-100) / 80

*Photometrics and the specification shown is taken using the recommended LED bulb fitted in the production luminaire.

CERTIFICATIONS

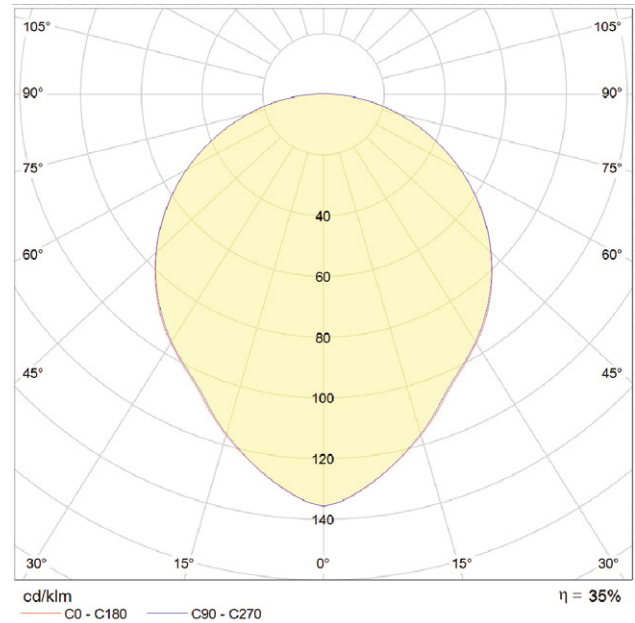
- / CE approved: this product has been assessed and complies with the essential requirements of the relevant European directives.



Tested according to the following European EN / IEC standards which relate specifically to electrical lighting products including:

- / EN 55015:2013 (radio disturbance)
- / EN 61547:2009 (EMC immunity)
- / EN 61000-3-2:2014 (EMC compatibility)
- / EN 61000-3-3:2013 (EMC compatibility)
- / EN 60598-2-4:1997 (portable luminaires)
- / EN 60598-1:2015 (general requirements)
- / EN 62493:2010 (human exposure to EMC)

PHOTOMETRICS



DOWNLOADS

Packshots and lifestyle photos, 2D / 3D files, care and maintenance instructions, CE attestation of conformity certificates, product fact sheets, and product presentations are available in our Image Bank at hay.com.

[Link to downloads.](#)

HAY